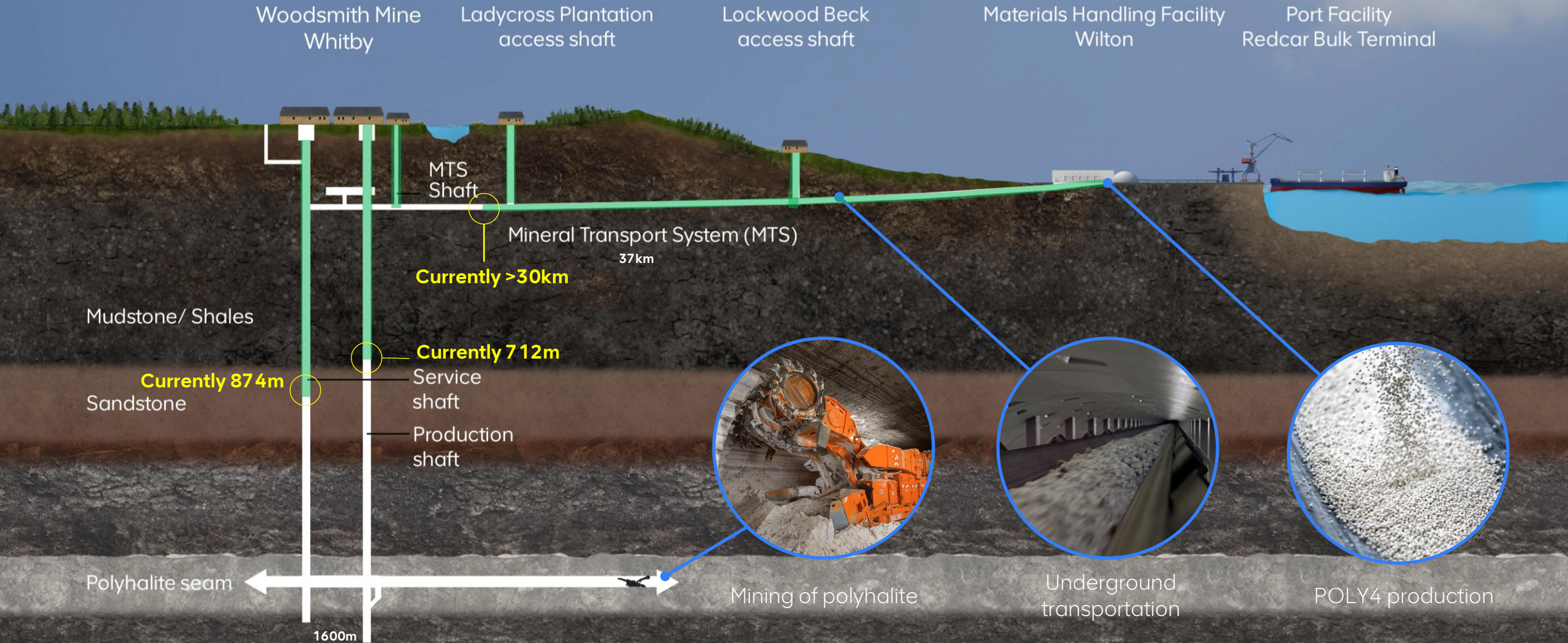


Liaison Group Forum Woodsmith Project update

April 2026



Woodsmith Project overview





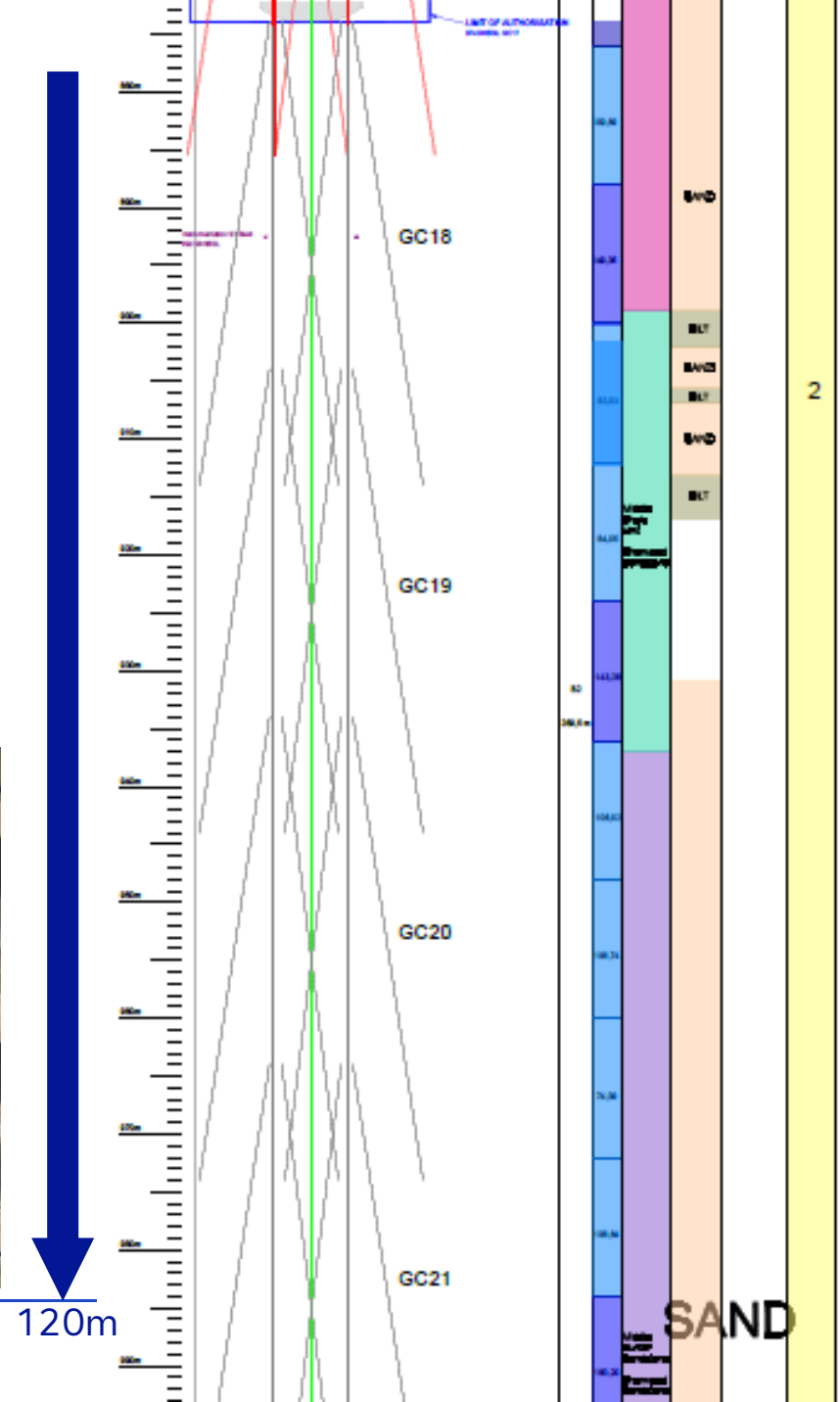
Shaft sinking



Conditions
Pre-Liner Grouting

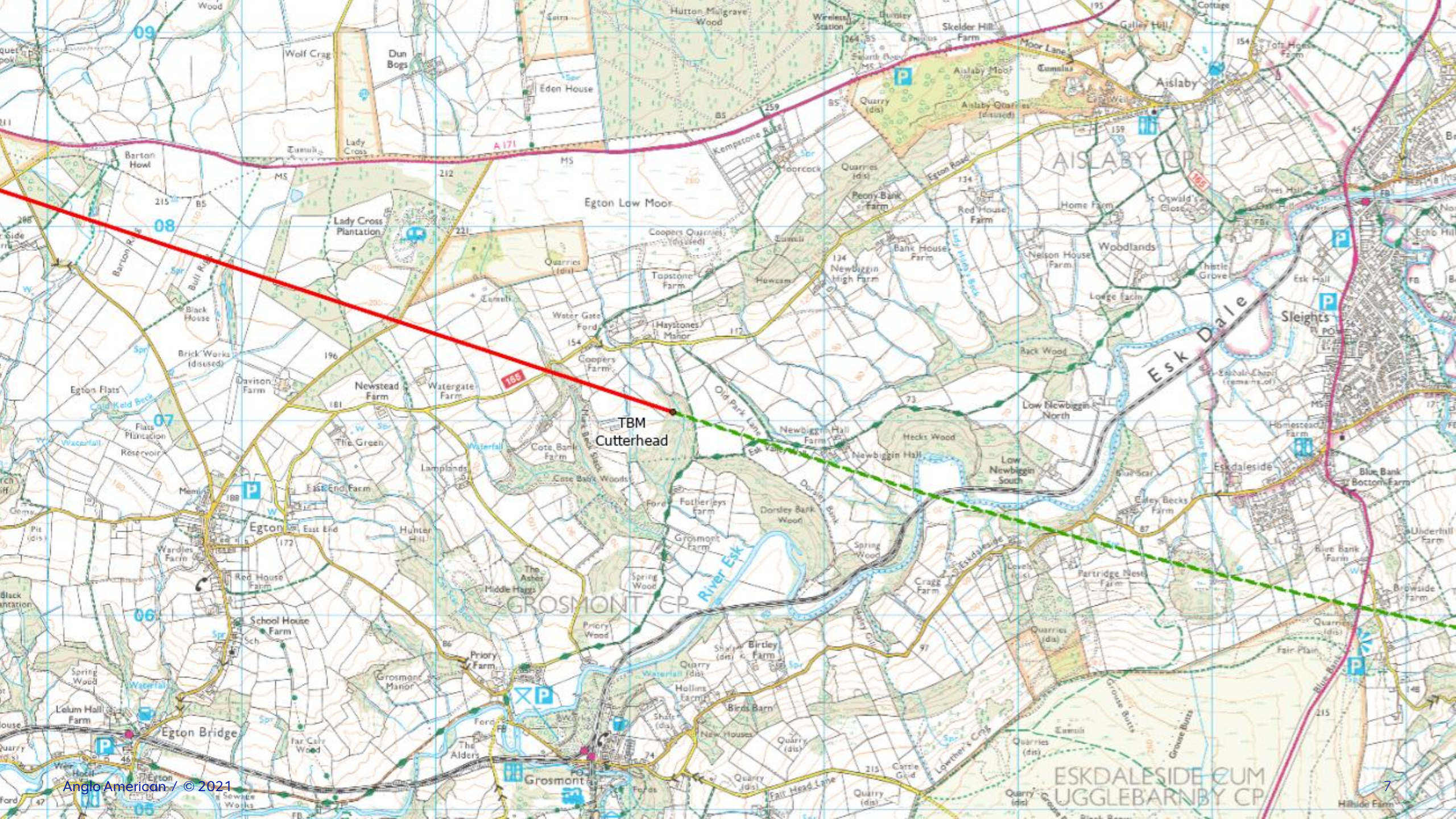


Conditions
Post-Liner Grouting







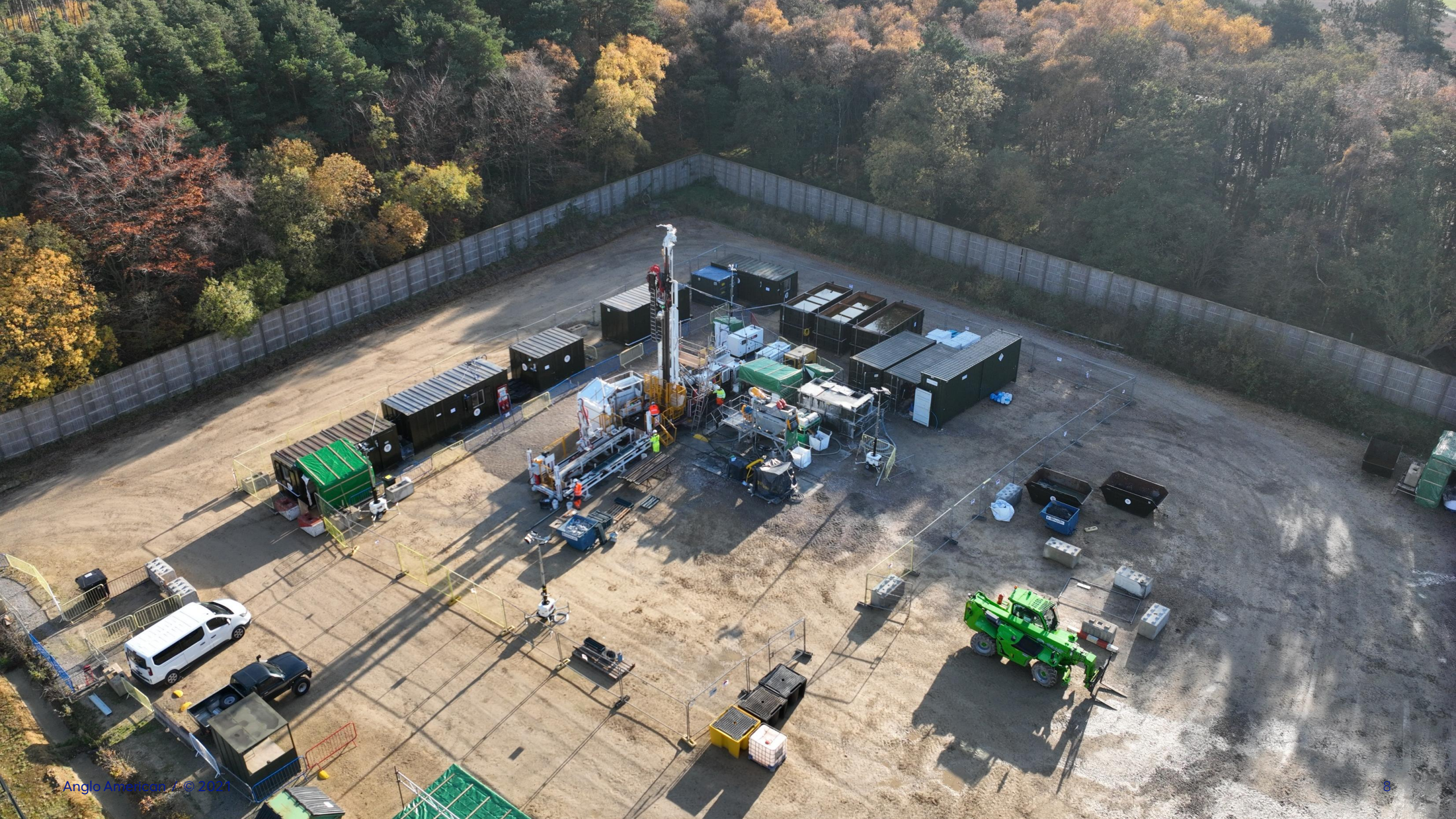


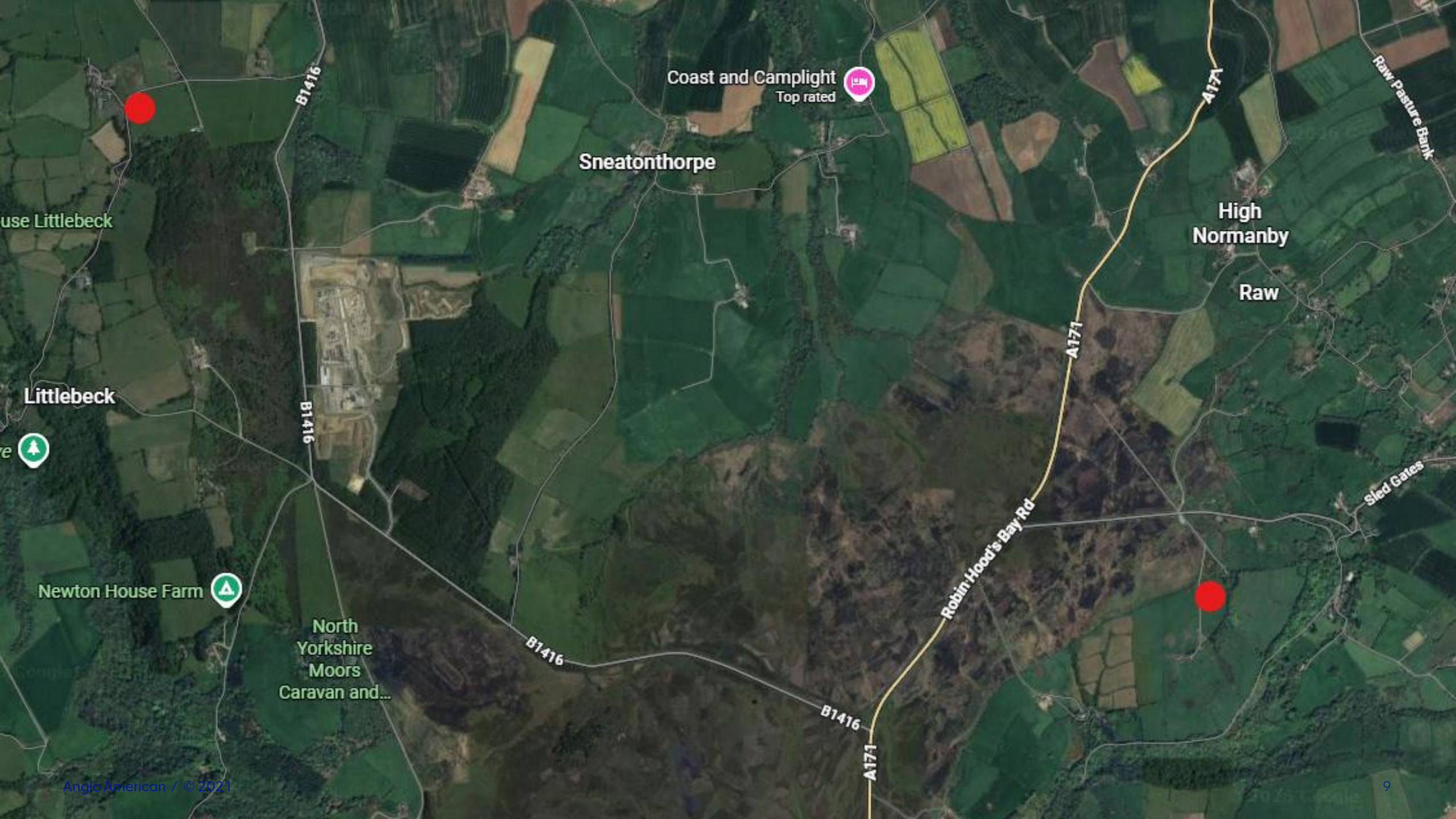
TBM Cutterhead

AISLABY CP

GROSMONT CP

ESKDALESIDE CUM UGGLEBARNBY CP





Coast and Camplight
Top rated



Sneatonthorpe

High Normanby

Raw

use Littlebeck

Littlebeck



Newton House Farm



North Yorkshire
Moors
Caravan and...

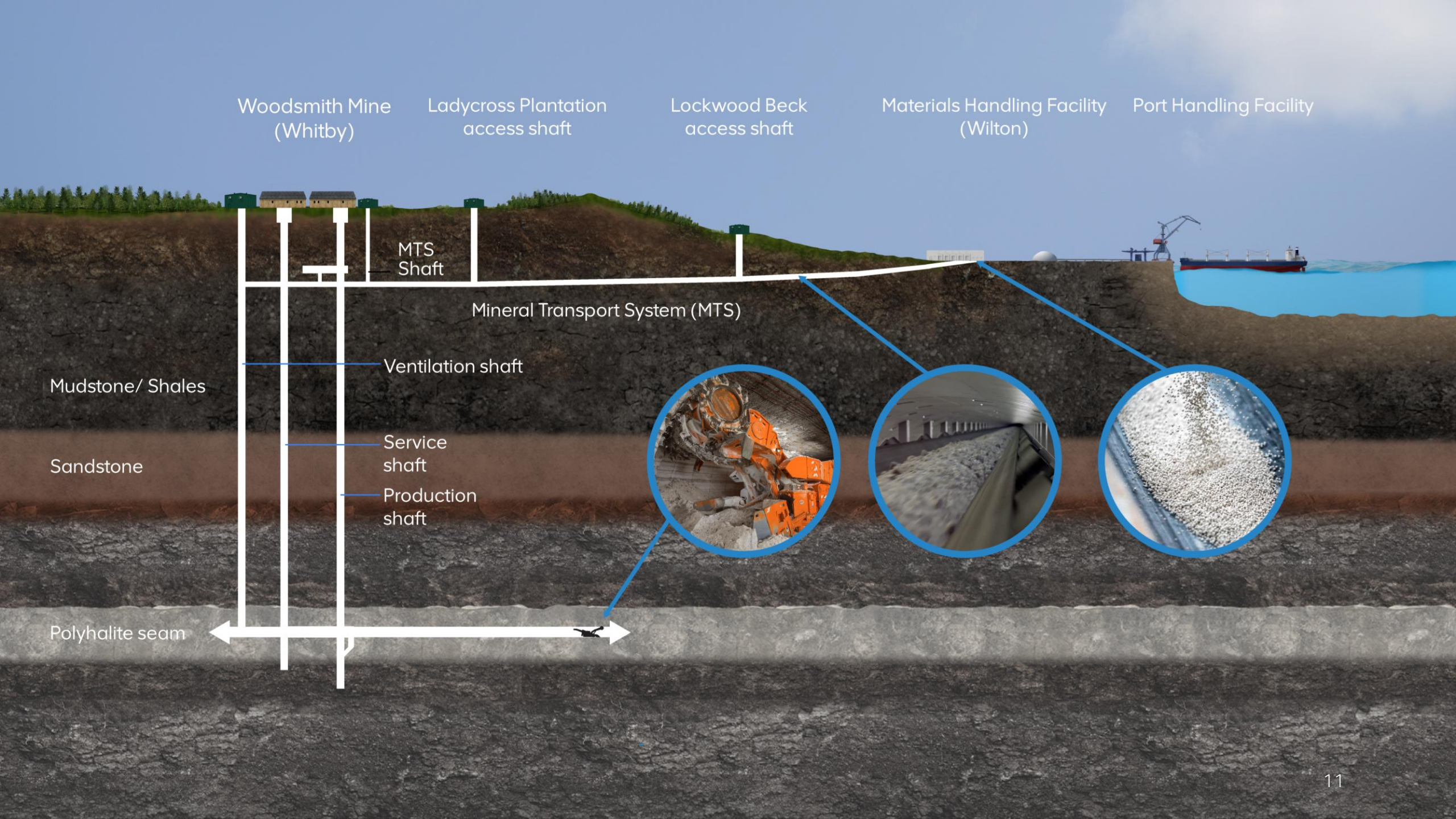
- Key**
- Site boundary
 - 1 Production shaft
 - 2 Service shaft
 - 3 Welfare building
 - 4 Facility hubs
 - 5 Air coolers
 - 6 Heat pumps/refrigeration plant
 - 7 Substation
 - 8 Ventilation shaft fan station
 - 9 Fire water tanks
 - Surface water attenuation ponds/wetlands
 - Landscaping and planting



**B1416
Sneaton Lane**

**B1416
Sneaton Lane**

**Red Gates
Corner**







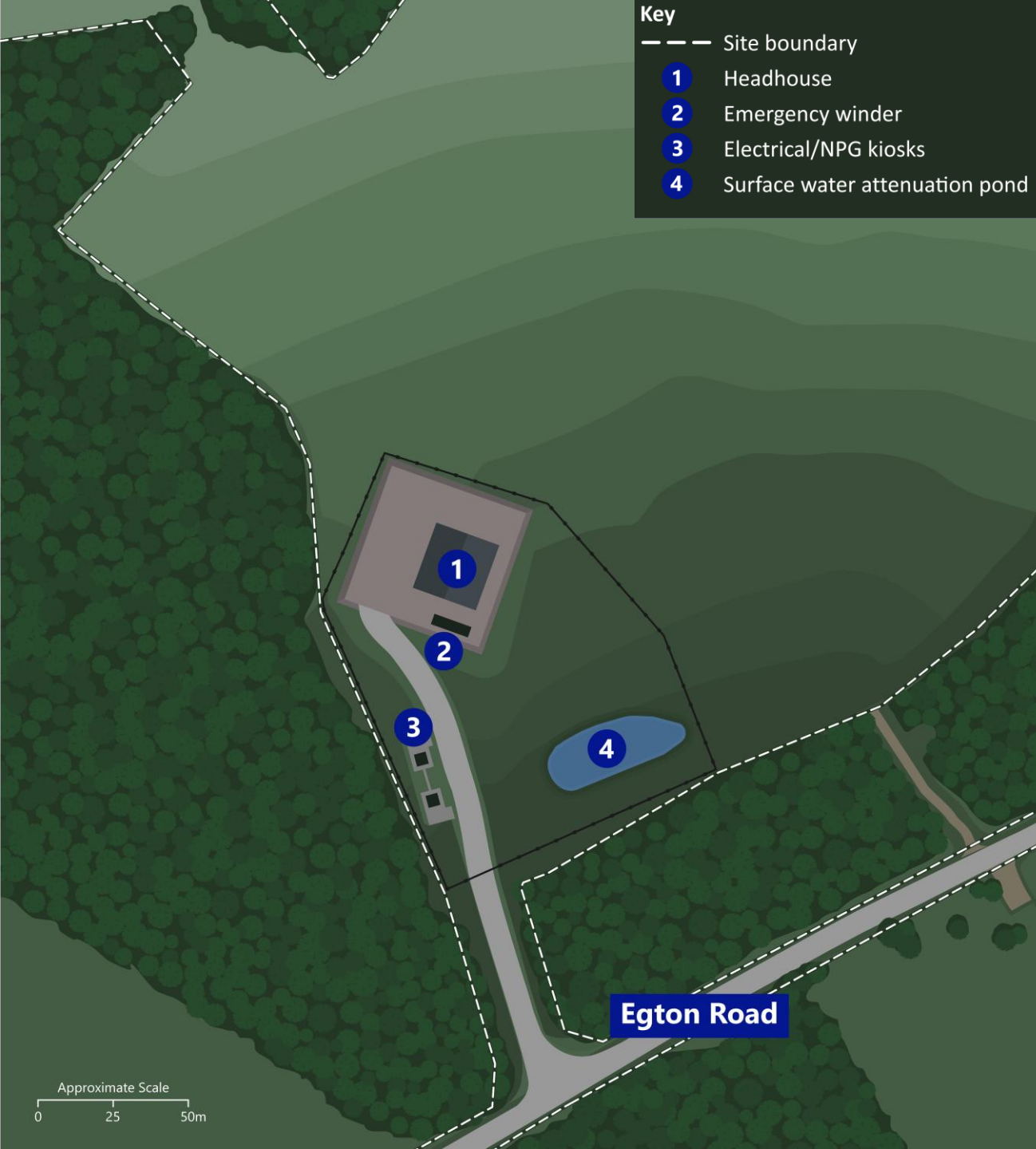
Ladycross Plantation

When the project is operational the shaft will be covered with a small agricultural style building.

An emergency rescue winder, electrical infrastructure and a surface water pond will be the only other permanent development.

The locations of the shaft and access road have moved from their original locations in our existing permission.

Remove the need to permanently store excavated material from the tunnel.



Lockwood Beck

The agricultural style building over the shaft will incorporate a small office, and emergency exhaust fans.

Amendments include:

- Fire water tanks & pump station
- Wastewater storage tanks
- Electrical substation

Sensitively designed to suit the site's agricultural setting and partially screened.

Remove the need to permanently store excavated material from the tunnel.



Key

- Site boundary
- 1 Headhouse
- 2 Rescue winch enclosure
- 3 Firewater/water tanks
- 4 Electrical/NPG kiosks
- 5 Pump house
- 6 Surface water attenuation pond
- Landscaping and planting

Lockwood Beck (operations)



ResolveLine

ResolveLine is our new centralised complaints system for managing complaints across the Woodsmith Project.

Please get in touch using the channels below if you have a complaint or concern.

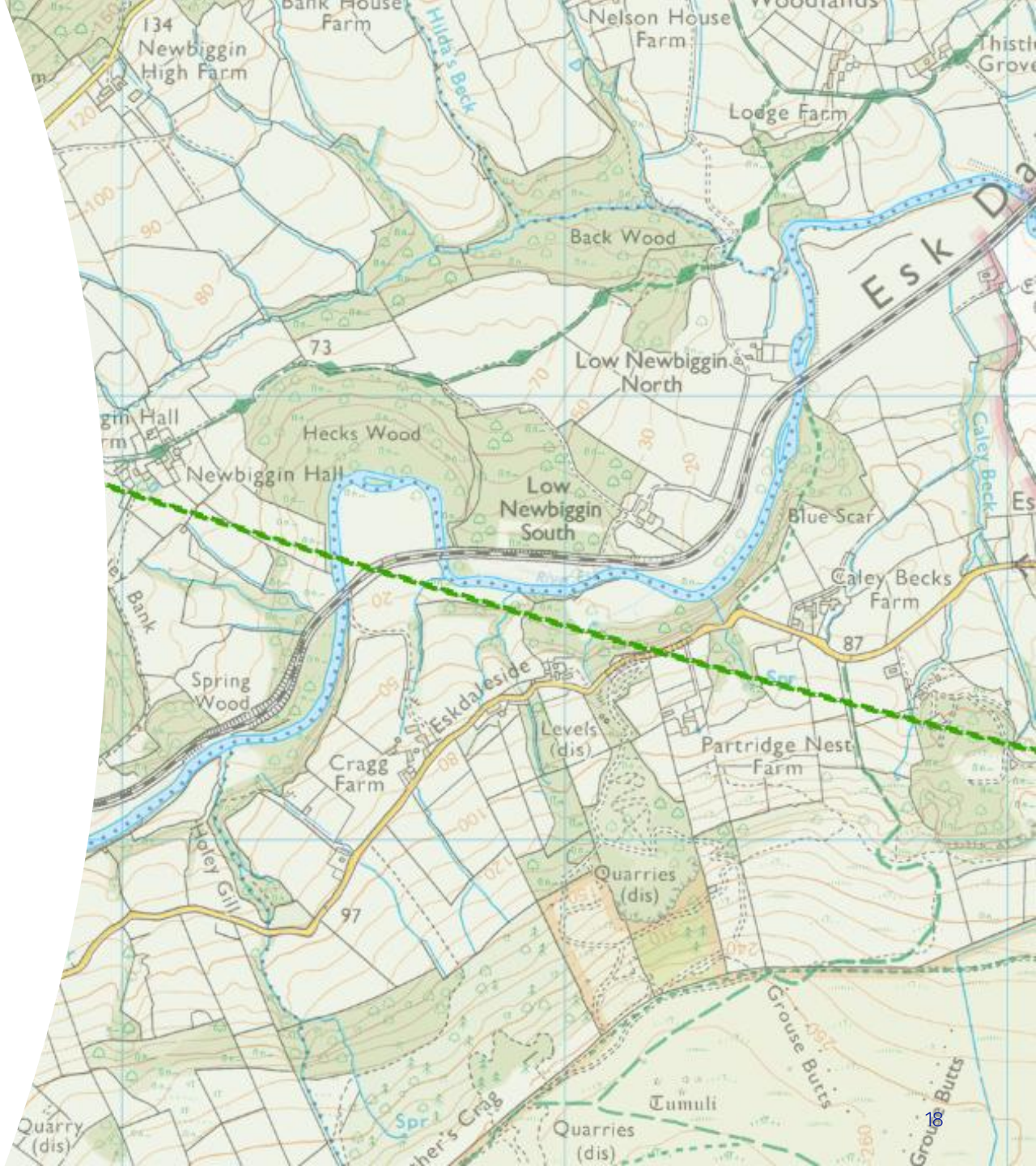
- **Email:** cropnutrients.resolve@angloamerican.com
- **WhatsApp:** 07903 573320
- **24-hour community helpline:** 0330 0886583
- **In person:** attend one of our community drop-ins

Introducing



ResolveLine

MTS / ESK





Any questions?