



# Liaison Group Forum

January 2024





# Woodsmith mine (construction)









# Sinking Methodology Main Shafts

## Excavation Diameter

7.45m min  
10.5m max

## Stabiliser Diameter

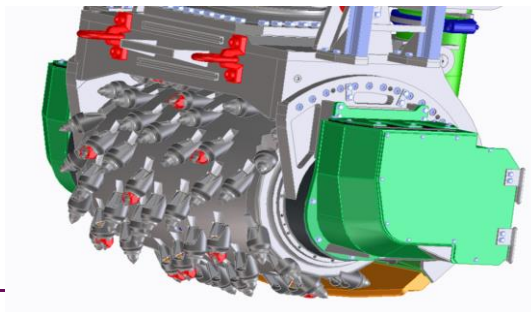
6.92m min  
10.5m max

## Total Height & Weight

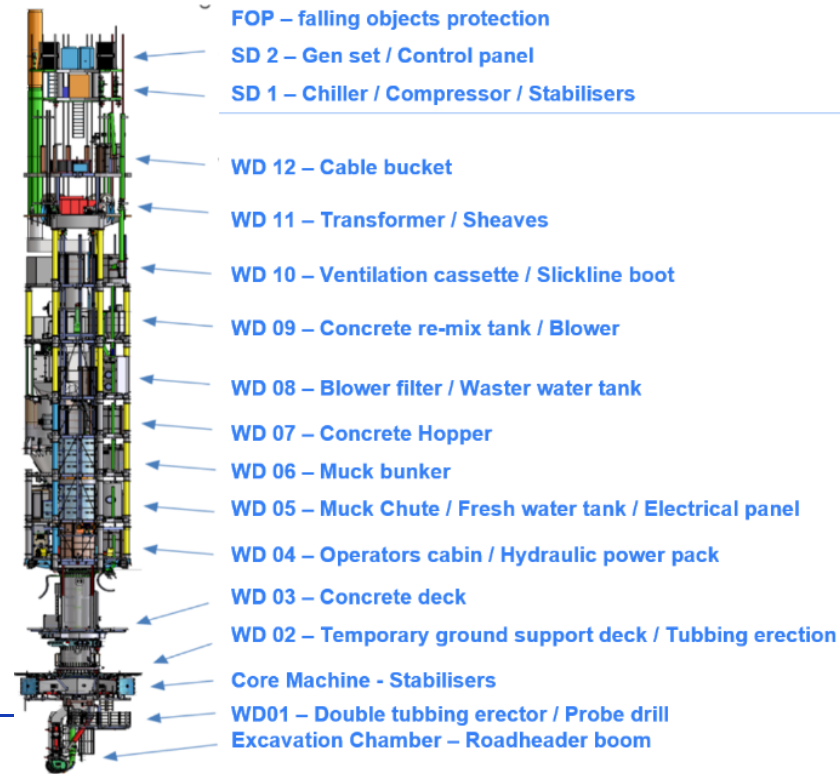
65.94m  
350 tonnes

## Support Cables & Winches

4 winches  
Support Cable 53mmØ  
Winch speed 0.2m/s



## SBR Layout



## Shaft Water Cubbies.



The cubby face charged in preparation for the second blast within the Production Shaft



Post blast inspection following the first successful blast







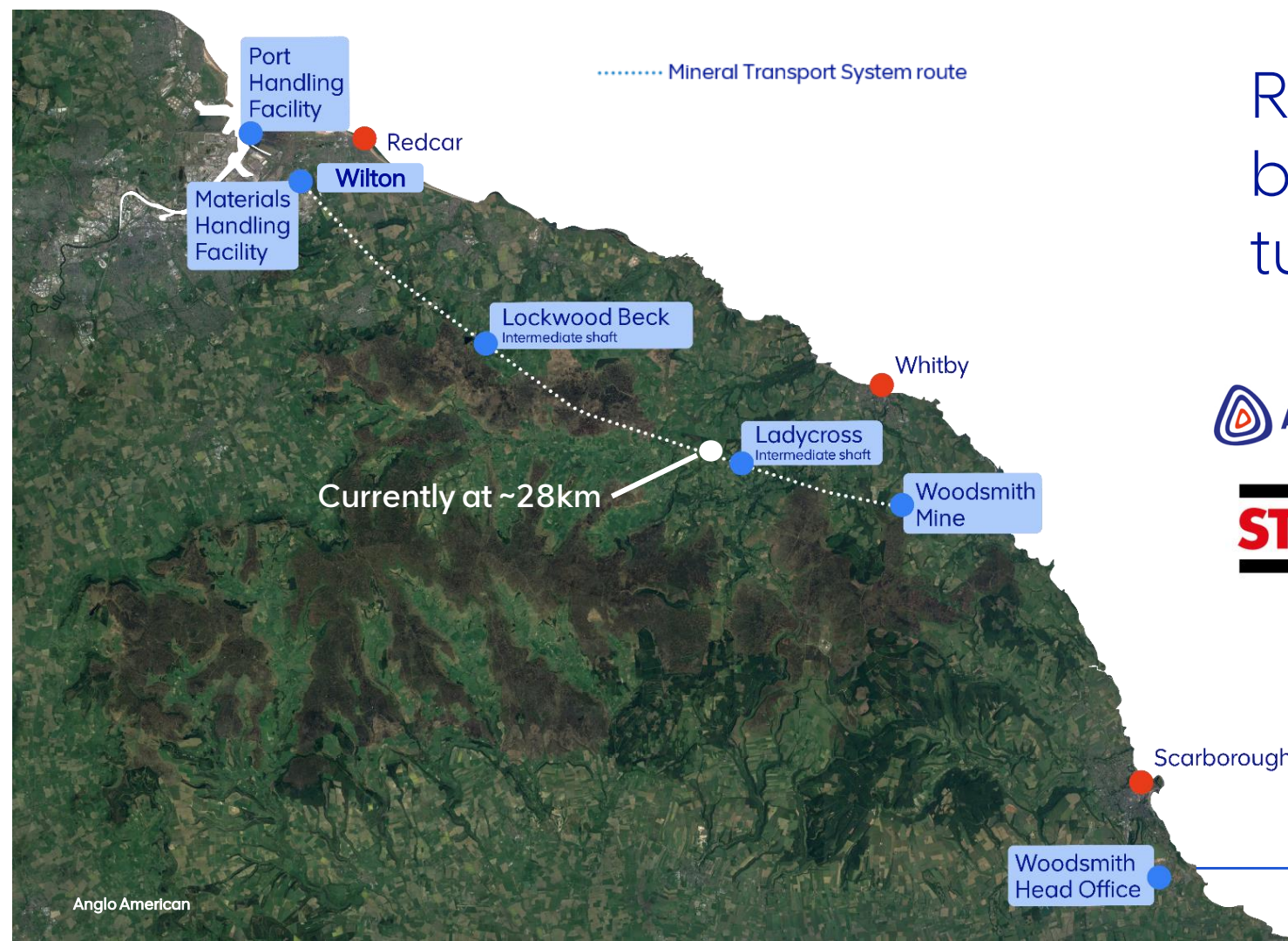




# Record breaking tunnel!



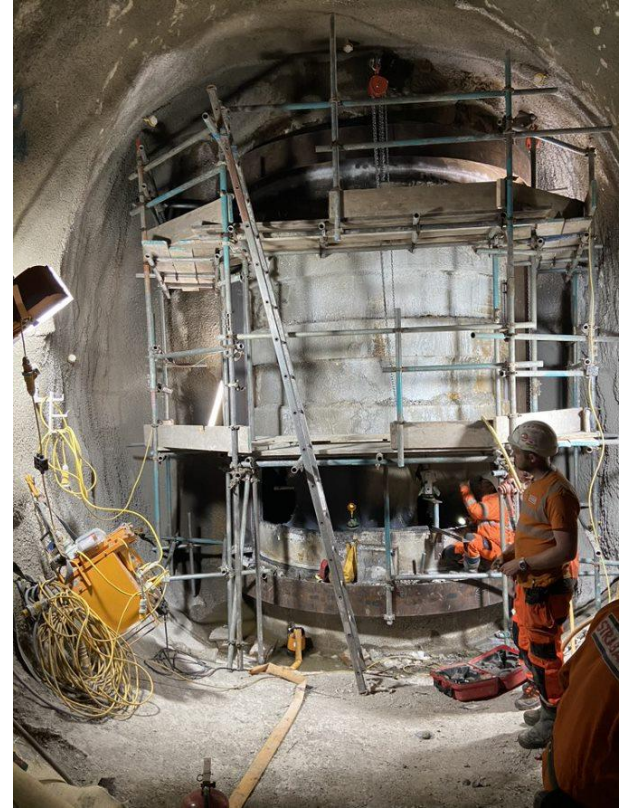
**STRABAG**





# Tunnel to shaft connection

- The TBM will stop at 29.2km around the end of April 2024 to connect the tunnel to the Lady Cross Shaft
- Brokk 500 will be used for excavation
- Rock anchors and sprayed concrete lining will be used for ground support
- This will provide another access & egress route to the underground works, ventilation intake and grout supply





# TBM cutterhead refurbishment

- During this year's technical stop, a timber heading will be excavated to gain access to the front of the TBM
- This will include weld repairs and component replacement on the cutterhead





























