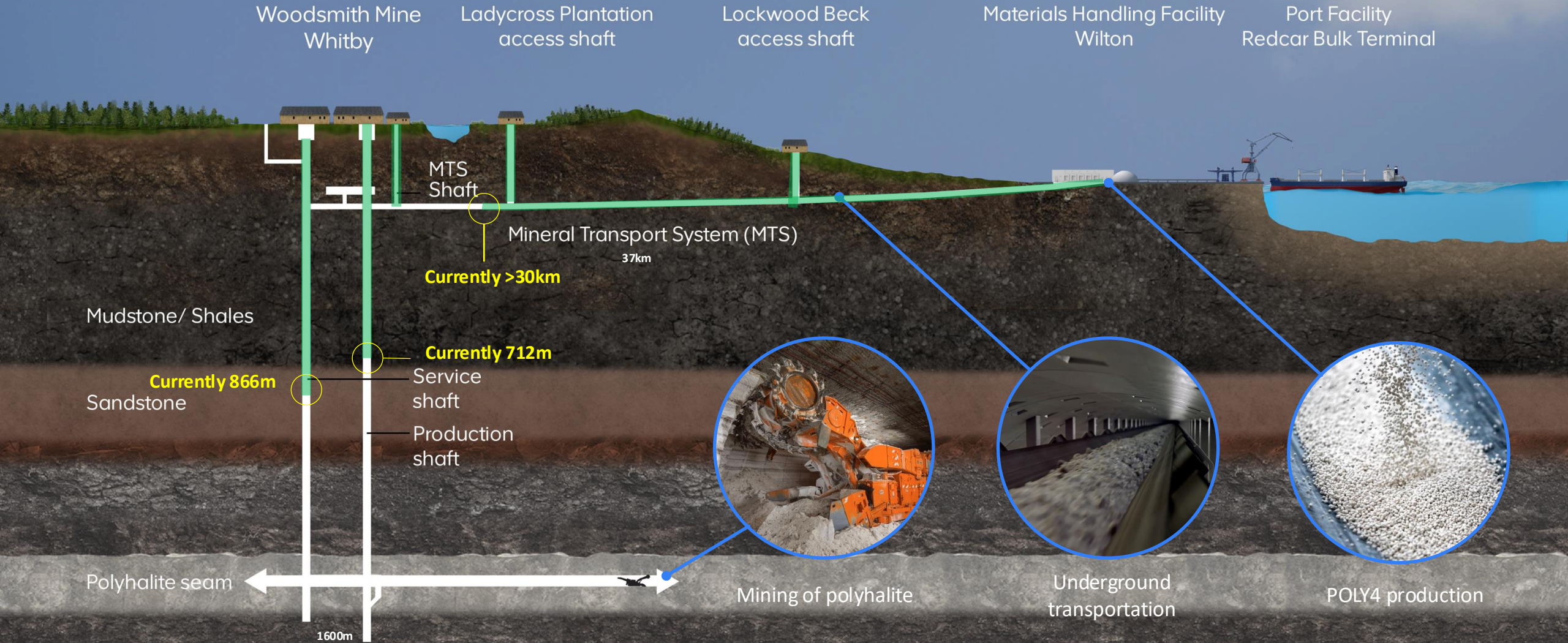


# Liaison Group Forum Woodsmith Project update

January 2026



# Woodsmith Project overview













# ResolveLine

ResolveLine is our new centralised complaints system for managing complaints across the Woodsmith Project.

Please get in touch using the channels below if you have a complaint or concern.

- Email: [cropnutrients.resolve@angloamerican.com](mailto:cropnutrients.resolve@angloamerican.com)
- WhatsApp: 07903 573320
- 24-hour community helpline: 0330 0886583
- In person: attend one of our community drop-ins

Introducing



**ResolveLine**

- Key**
- Site boundary
  - 1 Production shaft
  - 2 Service shaft
  - 3 Welfare building
  - 4 Facility hubs
  - 5 Air coolers
  - 6 Heat pumps/refrigeration plant
  - 7 Substation
  - 8 Ventilation shaft fan station
  - 9 Fire water tanks
  - Surface water attenuation ponds/wetlands
  - Landscaping and planting



**B1416  
Sneaton Lane**

**B1416  
Sneaton Lane**

**Red Gates  
Corner**



# Woodsmith Mine from A171 (construction)



# Woodsmith Mine from A171 (operations)



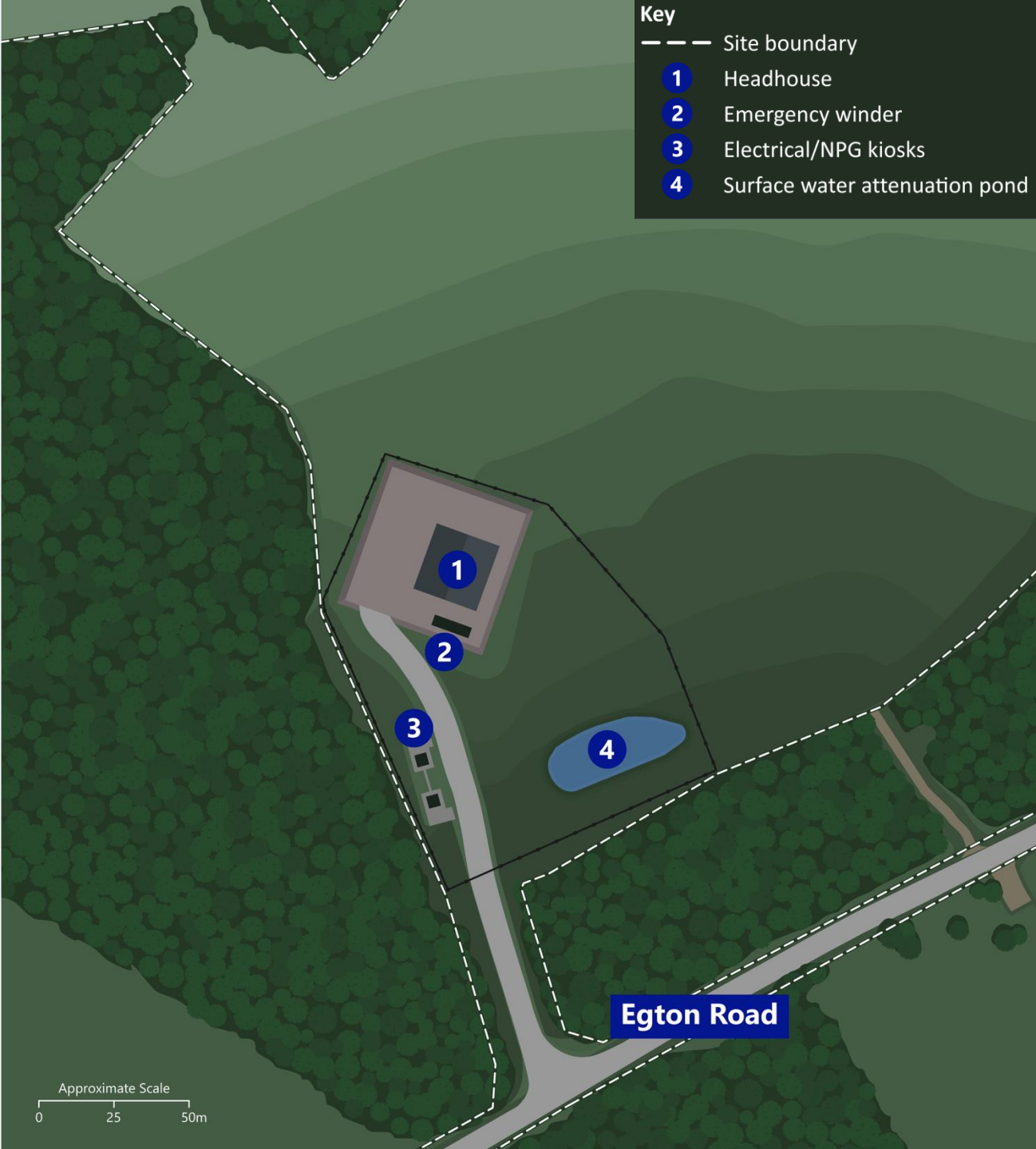
# Ladycross Plantation

When the project is operational the shaft will be covered with a small agricultural style building.

An emergency rescue winder, electrical infrastructure and a surface water pond will be the only other permanent development.

The locations of the shaft and access road have moved from their original locations in our existing permission.

Remove the need to permanently store excavated material from the tunnel.



# Lockwood Beck

The agricultural style building over the shaft will incorporate a small office, and emergency exhaust fans.

Amendments include:

- Fire water tanks & pump station
- Wastewater storage tanks
- Electrical substation

Sensitively designed to suit the site's agricultural setting and partially screened.

Remove the need to permanently store excavated material from the tunnel.



# Lockwood Beck (operations)





Any questions?