



North York Moors
National Park

S106 contribution update 2025

Context

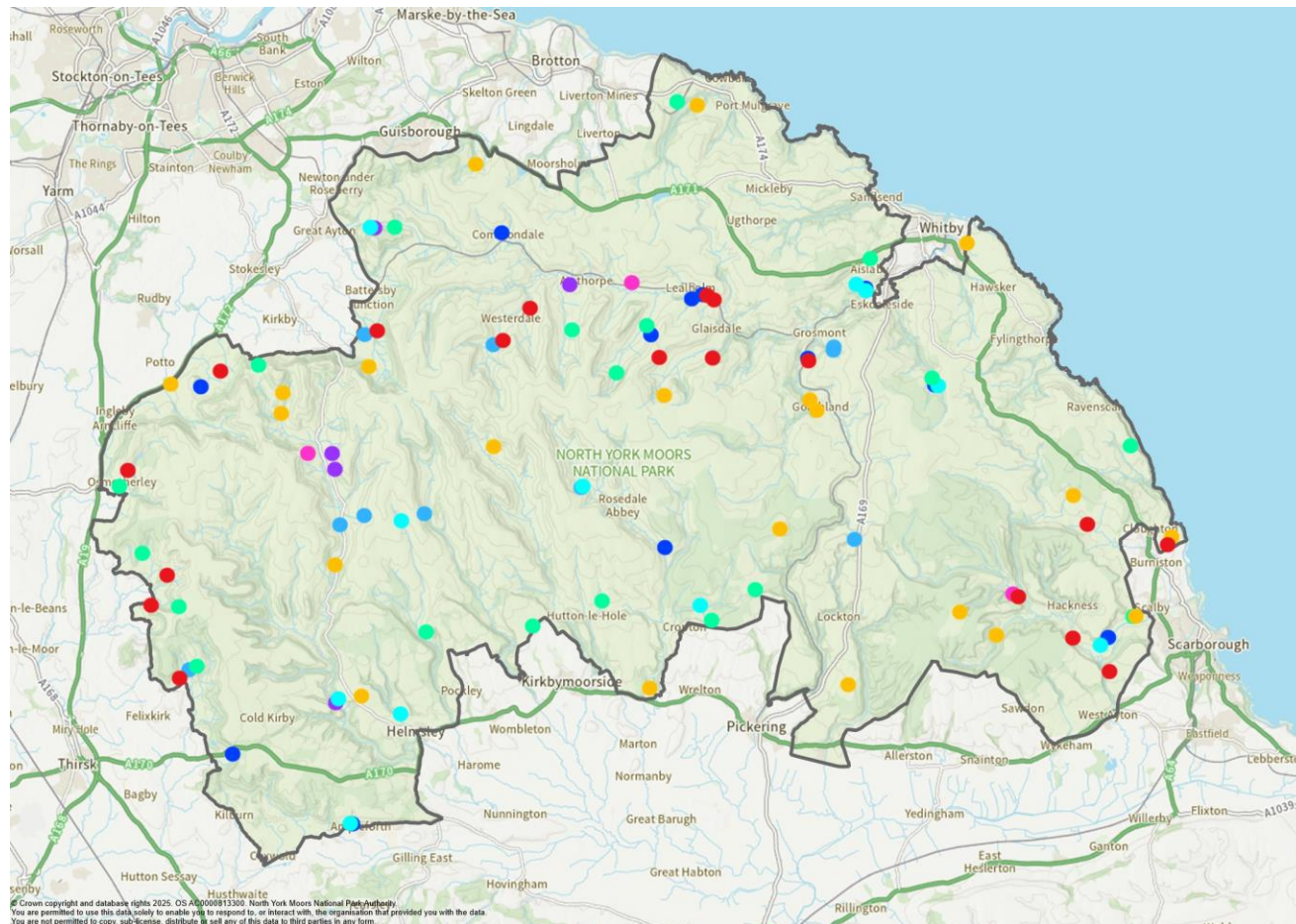
- S106 agreement to offset unmitigated impacts of the mine development
- 100 year agreement
- 3 primary contributions
 - Core Policy D
 - Landscape & Ecology
 - Tourism
- Additional contributions; monitoring, geological data, archaeological data, employment, non financial provisions.
- Security arrangements

Core Policy D

- Contribution is used for woodland creation
- 2024: 19 projects and 80.34ha planted
- Farndale project is a finalist in the prestigious John Boddy Award for excellence in forestry design and practice in Yorkshire for 2025
- To date, 100 projects delivered with 442ha planted in the past 8 years



S106 Woodland Creation Core Policy D



Landscape & Ecology

- Enhancement and creation of habitats
- Protection and increasing biodiversity and bioabundance
- Enhancement and protection of historic environment
- Enhancement of access and public rights of way



Habitat creation and enhancement

- 22ha of habitat enhanced or created
- 17.8ha of woodland habitat enhanced
- 131 landscape trees planted
- 5 ponds created
- 3687m boundary restored



Biodiversity and Bioabundance

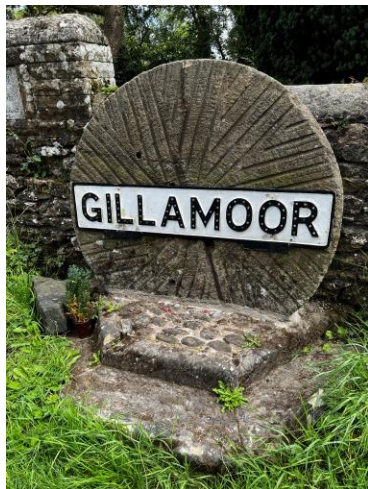
- Continued support for beaver monitoring at Cropton
- Moorland wading bird survey
- Contribution to Birds on the Edge
- Contribution to Grubs Up
- Dark skies



Photo credit Sam Oakes

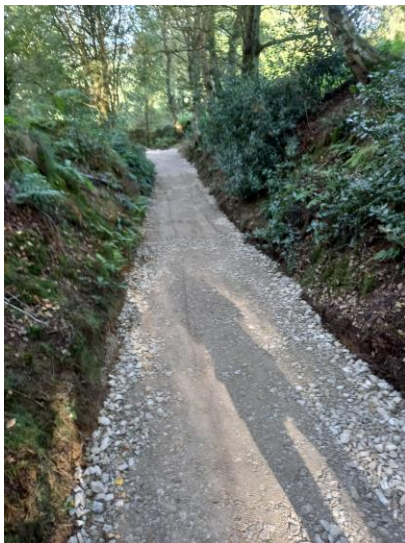
Historic Environment

- 6 new traditional signs
- 7 archaeology project grants
- 16 projects enhancing traditional buildings
- 13 heritage skills training activities (157 attendees)



Access

- 10.1 Km PROW enhanced
- 15 new gates installed, 5 additional gates made more accessible. 2 Bridges Installed. 1 large flight of steps improved.
- 5 L4 apprentices and 1 National Trail apprentice supported



Tourism

- 21 tourism businesses supported (£120k)
- Men's tour of Britain
- Annual Dark Skies festival
- York Ice Festival
- Life Unplugged campaign
- Cycling Tourism development



Tourism

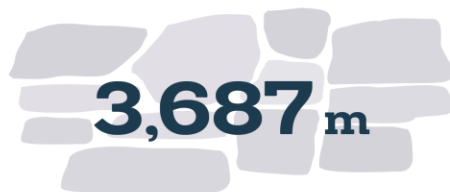
- Partnership with Welcome to York
- Visit Whitby events
- International visitor campaign



Infographic 2024-2025



80.34
hectares of
woodland creation
44,929
trees planted



3,687 m
of traditional boundaries
restored in **3** projects



16
studies, reports
and plans



131
landscape trees



21
tourism businesses or
schemes supported



10.11
km
of Public Rights of
Way improved or
enhanced



North York Moors
National Park
Woodsmith Mine
Compensation
and Mitigation
122 projects delivered
in 2024/25



24
degraded heritage
assets protected,
renovated or restored



Traditional skills training
13 **157**
Training days Attendees

22.14

hectares of natural environment
management, creation and enhancement

23

access
improvements
installed



17.81
hectares of woodland
and forestry enhancement

Infographic 2017-2025



459,12
hectares of
woodland creation
286,106
trees planted



20.816 km

of traditional
boundaries restored



26
studies, reports
and plans



972
landscape trees



78
tourism businesses or
schemes supported



43.66
km
of Public Rights of
Way improved or
enhanced



North York Moors
National Park

**Woodsmith Mine
Compensation
and Mitigation
Projects delivered
2017/18 to 2024/25**



130
degraded heritage
assets protected,
renovated or restored



Traditional skills training
17 **222**
Training days Attendees

128.22

hectares of natural environment
management, creation and enhancement

58

access
improvements
installed



244.28
hectares of woodland
and forestry enhancement

Other Contributions

- Archaeology
 - Continued support for PhD project
- Geology
 - Postdoctoral work completed
- Monitoring
- Employment
 - No information received