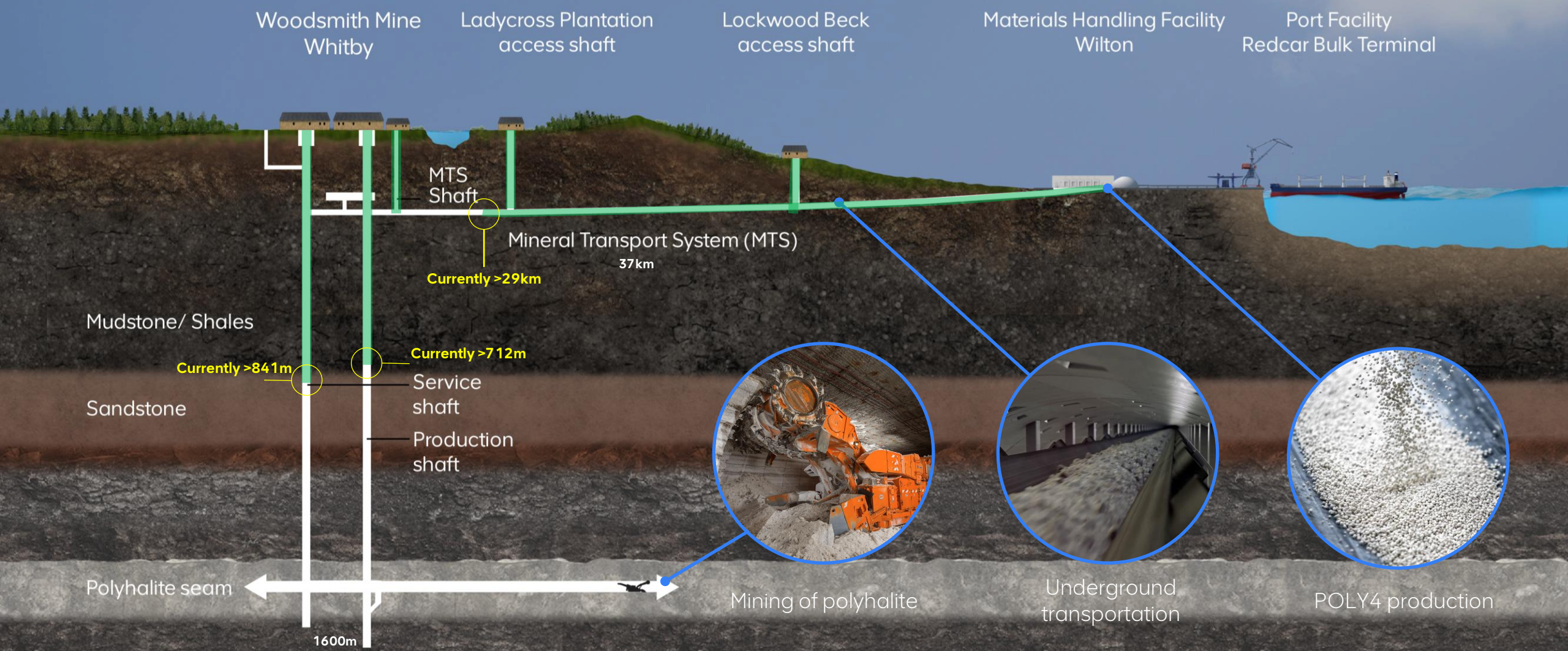


Liaison Group Forum Woodsmith Project update

October 2025



Woodsmith Project overview



Woodsmith mine (construction)



Production shaft

Service shaft

Site offices

MTS Shaft







- Key**
- Site boundary
 - 1 Production shaft
 - 2 Service shaft
 - 3 Welfare building
 - 4 Facility hubs
 - 5 Air coolers
 - 6 Heat pumps/refrigeration plant
 - 7 Substation
 - 8 Ventilation shaft fan station
 - 9 Fire water tanks
 - Surface water attenuation ponds/wetlands
 - Landscaping and planting

**B1416
Sneaton Lane**

**B1416
Sneaton Lane**

**Red Gates
Corner**



Woodsmith Mine from A171 (construction)



Woodsmith Mine from A171 (operations)



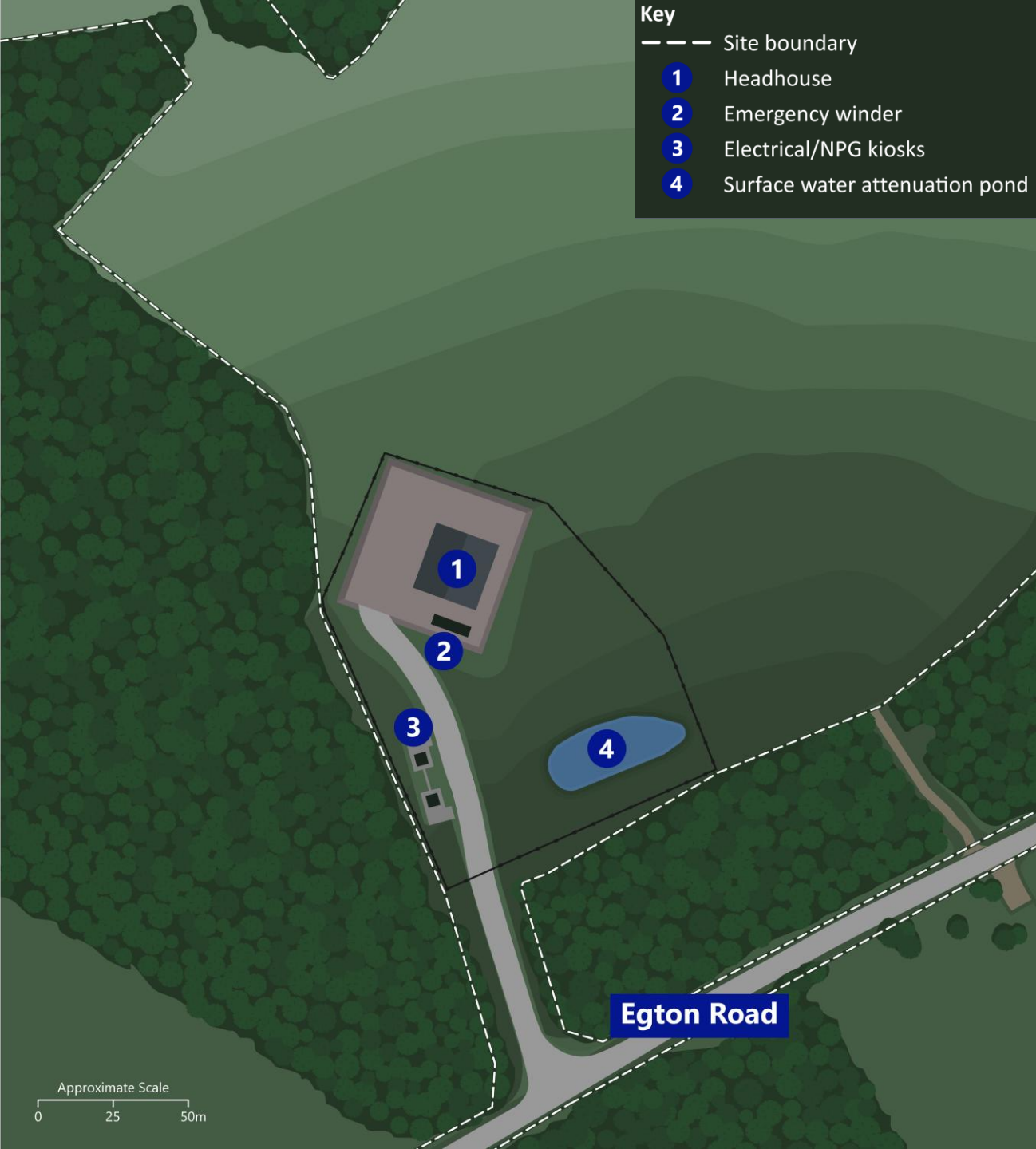
Ladycross Plantation

When the project is operational the shaft will be covered with a small agricultural style building.

An emergency rescue winder, electrical infrastructure and a surface water attenuation pond will be the only other permanent development.

The locations of the shaft and access road have moved from their original locations in our existing permission.

Remove the need to permanently store excavated material from the tunnel.



Lockwood Beck

The agricultural style building over the shaft will incorporate a small office, and emergency exhaust fans.

Amendments include:

- Fire water tanks & pump station
- Wastewater storage tanks
- Electrical substation

Sensitively designed to suit the site's agricultural setting and partially screened.

Remove the need to permanently store excavated material from the tunnel.



Lockwood Beck (operations)



Any questions?